

Telescopic Driveshafts (Shaft Type A)

RATING Tsd (Nm)	SERIES	PART NUMBER	MAX ANGLE	øA	B	øC	PCD	No. / ød	E	F	øG	Lz (Min.)	La (Ext.)	WEIGHT (Lz Min.)
18000	105	105A2250	15°	225	5.0	140	196	8 / 16	108	15	225	790	75	96
25000	115	115A2500	15°	250	6.0	140	218	8 / 18	135	18	225	960	100	123
37000	125	125A2850	15°	285	7.0	175	245	8 / 20	135	20	285	1030	100	161
52000	135	135A3150	15°	315	7.0	175	280	8 / 22	150	22	315	1220	120	257
72000	145	145A3500	15°	350	8.0	220	310	10 / 22	170	25	350	1360	135	375
94000	155	155A3900	15°	390	8.0	250	345	10 / 24	190	28	390	1490	150	518
136000	165	165A4350	15°	435	10.0	280	385	10 / 27	210	32	435	1620	170	693

NOTE:

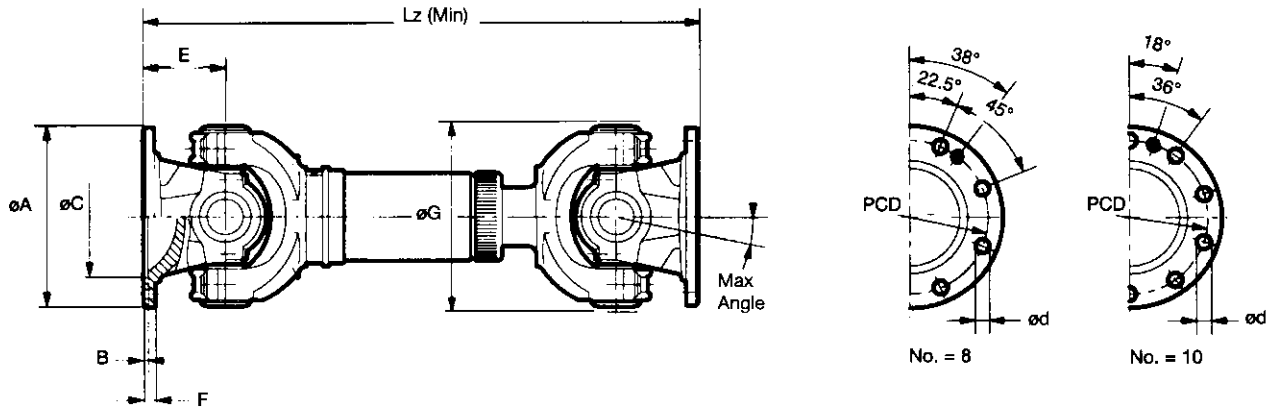
PCD = Pitch Circle Diameter
 Tsd (Nm) = Short duration torque
 Lz = Compressed length
 La = Extension

All dimensions in millimetres
 Shaft weight in kilograms



TRANSMISSIONER
KEMIPUMPAR

Box 5844, 102 48 Stockholm
 Tel. 08-667 30 00 · Fax 08-660 78 46



Short Coupled Driveshafts (Shaft Type Y)

RATING Tsd (Nm)	SERIES	PART NUMBER	MAX ANGLE	øA	B	øC	PCD	No. / ød	E	F	øG	Lz A	La A	Lz B	La B	Lz C	La C	WEIGHT B (Lz Min.)
18000	105	105Y2250	15°	225	5	140	196	8 / 16	108	15	225	650	75	600	45	550	40	90
25000	115	115Y2500	15°	250	6	140	218	8 / 18	135	18	225	840	90	780	50	710	40	118
37000	125	125Y2850	15°	285	7	175	245	8 / 20	135	20	285	855	100	795	60	735	60	156
52000	135	135Y3150	15°	315	7	175	280	8 / 22	150	22	315	1025	120	950	70	880	85	230
72000	145	145Y3500	15°	350	8	220	310	10 / 22	170	25	350	1160	135	1070	90	980	70	333
94000	155	155Y3900	15°	390	8	250	345	10 / 24	190	28	390	1280	150	1170	90	1070	75	490
136000	165	165Y4350	15°	435	10	280	385	10 / 27	210	32	435	1400	170	1300	105	1200	90	650

NOTE:

PCD = Pitch Circle Diameter
 Tsd (Nm) = Short duration torque
 Lz = Compressed length (Minimum)
 La = Extension

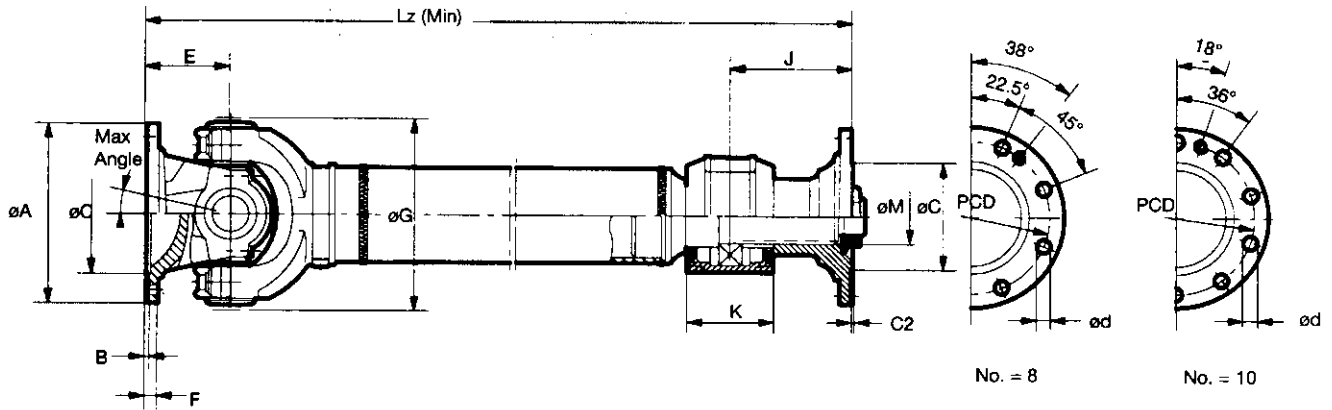
All dimensions in millimetres
 Shaft weight in kilograms

The above Driveshafts are standard assemblies. Shorter Coupled Driveshafts can be manufactured using special parts. Contact our Technical Sales Department for more information.



TRANSMISSIONER
KEMIPUMPAR

Box 5844, 102 48 Stockholm
 Tel. 08-667 30 00 · Fax 08-660 78 46



Industrial Midship Driveshafts (Shaft Type B)

RATING Tsd (Nm)	SERIES	PART NUMBER	MAX ANGLE	øA	B	øC	C2	PCD	No. / ød	E	F	øG	K	J	Lz (Min.)	øM	WEIGHT (Lz Min.)
18000	105	105B2250	15°	225	5	140	4.5	196	8 / 16	108	15	225	135	192	640	80	85
25000	115	115B2500	15°	250	6	140	5.5	218	8 / 18	135	18	225	160	235	755	100	106
37000	125	125B2850	15°	285	7	175	6.5	245	8 / 20	135	20	285	160	235	780	100	137
52000	135	135B3150	15°	315	7	175	6.5	280	8 / 22	150	22	315	190	300	830	130	211
72000	145	145B3500	15°	350	8	220	7	310	10 / 22	170	25	350	215	335	920	150	305
94000	155	155B3900	15°	390	8	250	7	345	10 / 24	190	28	390	225	355	1035	160	428
136000	165	165B4350	15°	435	10	280	9	385	10 / 27	210	32	435	225	355	1080	160	560

NOTE:

PCD = Pitch Circle Diameter
 Tsd (Nm) = Short duration torque
 Lz = Minimum Fixed length

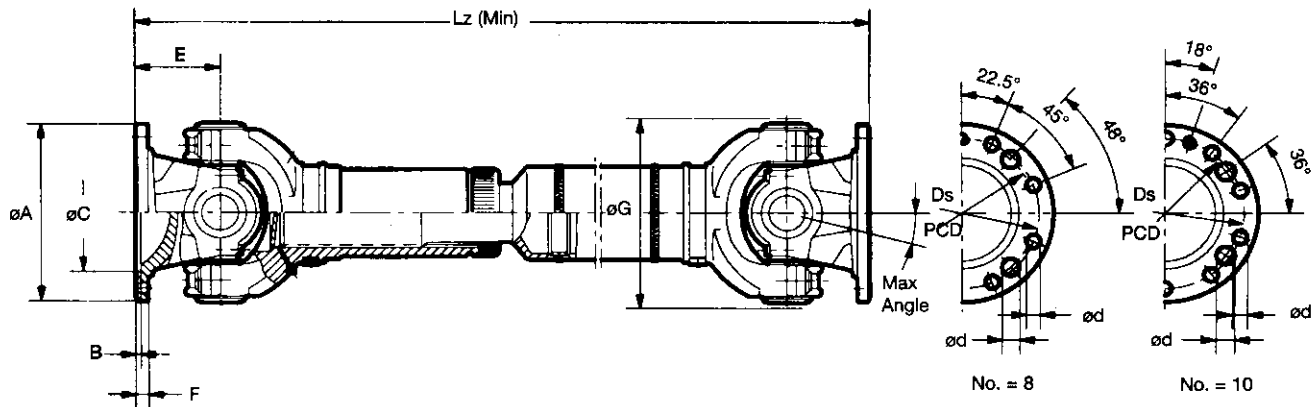
All dimensions in millimetres
 Shaft weight in kilograms



TRANSMISSIONER
 KEMIPUMPAR

Box 5844, 102 48 Stockholm
 Tel. 08-667 30 00 · Fax 08-660 78 46

Heavy Duty Data Sheet (with dowel pins)



Telescopic Driveshafts (Shaft Type A)

RATING Tsd (Nm)	SERIES	PART NUMBER	MAX ANGLE	øA	B	øC	PCD	No. / ød	Ds	No / ød DOWEL	E	F	øG	Lz (Min)	La (Ext)	WEIGHT (Lz Min)
33000	106	106A2250	15°	225	5	140	196	8 / 16	192	4 / 21	108	15	225	790	75	98
40000	116	116A2500	15°	250	6	140	218	8 / 18	214	4 / 25	135	18	225	960	100	125
47000	126	126A2850	15°	285	7	175	245	8 / 20	240	4 / 28	135	20	285	1030	100	163
70000	136	136A3150	15°	315	7	175	280	8 / 22	270	4 / 30	150	22	315	1220	120	259
102000	146	146A3500	15°	350	8	220	310	10 / 22	300	4 / 32	170	25	350	1360	135	381
145000	156	156A3900	15°	390	8	250	345	10 / 24	340	4 / 32	190	28	390	1490	150	518
195000	166	166A4350	15°	435	10	280	385	10 / 27	378	4 / 35	210	32	435	1620	170	693

NOTE:

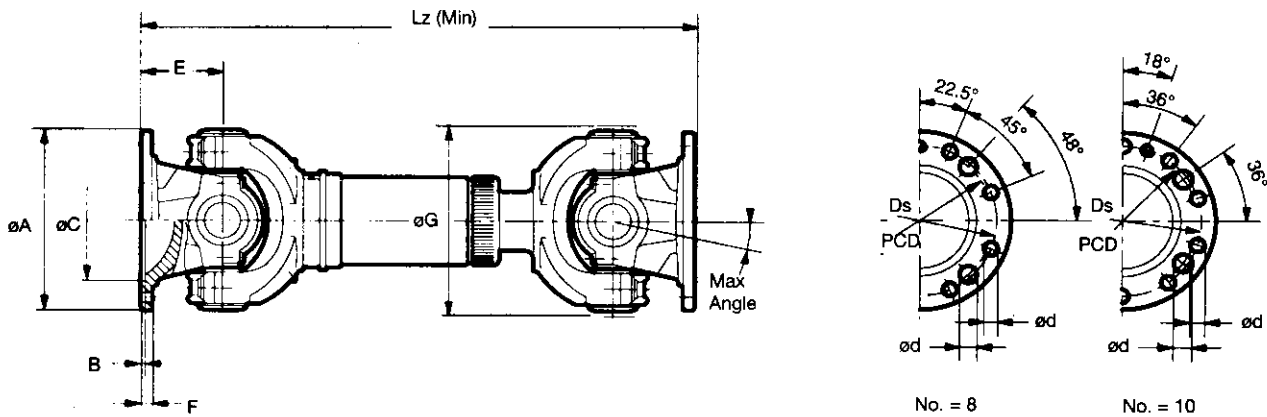
PCD = Pitch Circle Diameter
 Tsd (Nm) = Short duration torque
 Lz = Compressed length
 La = Extension

All dimensions in millimetres
 Shaft weight in kilograms



TRANSMISSIONER
KEMIPUMPAR

Box 5844, 102 48 Stockholm
 Tel. 08-667 30 00 · Fax 08-660 78 46



Short Coupled Driveshafts (Shaft Type Y)

RATING Tsd (Nm)	SERIES	PART NUMBER	MAX ANGLE	øA	B	øC	PCD	No. / ød	Ds	No. / ød DOWEL	E	F	øG	Lz A	La A	Lz B	La B	Lz C	La C	WEIGHT B (Lz Min.)
33000	106	106Y2250	15°	225	5	140	196	8 / 16	192	4 / 21	108	15	225	650	75	600	45	550	40	72
40000	116	116Y2500	15°	250	6	140	218	8 / 18	214	4 / 25	135	18	225	840	90	780	50	710	40	118
47000	126	126Y2850	15°	285	7	175	245	8 / 20	240	4 / 28	135	20	285	855	100	795	60	735	60	156
70000	136	136Y3150	15°	315	7	175	280	8 / 22	270	4 / 30	150	22	315	1025	120	950	70	880	85	230
102000	146	146Y3500	15°	350	8	220	310	10 / 22	300	4 / 32	170	25	350	1160	135	1070	90	980	70	333
145000	156	156Y3900	15°	390	8	250	345	10 / 24	340	4 / 32	190	28	390	1280	150	1170	90	1070	75	490
195000	166	166Y4350	15°	435	10	280	385	10 / 27	378	4 / 35	210	32	435	1400	170	1300	105	1200	90	650

NOTE:

PCD = Pitch Circle Diameter
 Tsd (Nm) = Short duration torque
 Lz = Compressed length
 La = Extension

All dimensions in millimetres
 Shaft weight in kilograms

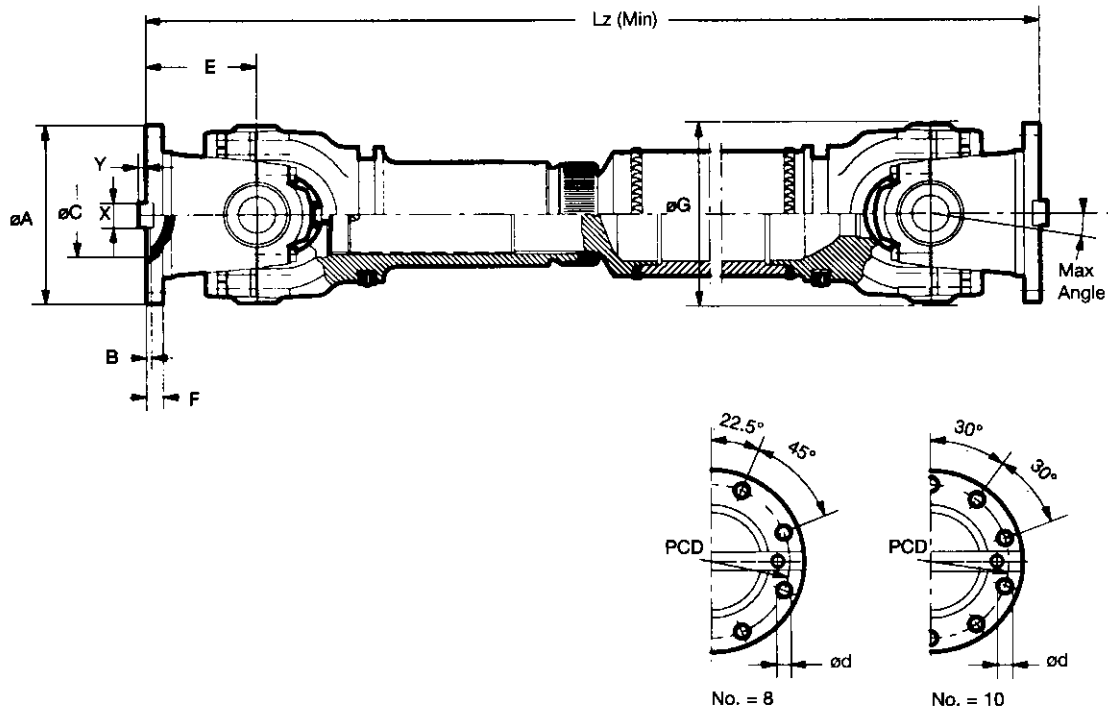
The above Driveshafts are standard assemblies. Shorter Coupled Driveshafts can be manufactured using special parts. Contact our Technical Sales Department for more information.



TRANSMISSIONER
KEMPUMPAR

Box 5844, 102 48 Stockholm
 Tel. 08-667 30 00 · Fax 08-660 78 46

Heavy Duty Data Sheet (with face key)



Telescopic Driveshafts (Shaft Type A)

RATING Tsd (Nm)	SERIES	PART NUMBER	MAX ANGLE	øA	B	øC	PCD	No. / ød	E	F	øG	X	Y	Lz (Min.)	La (Ext.)	WEIGHT (Lz Min.)
44000	107	107A2250	15°	225	5	105	196	8 / 17	135	20	225	32	9	965	85	120
64000	117	117A2500	15°	250	6	105	218	8 / 19	145	25	250	40	12.5	1035	90	170
98000	127	127A2850	15°	285	7	125	245	8 / 21	155	27	285	40	15	1180	120	250
140000	137	137A3150	15°	315	8	130	280	10 / 23	170	32	315	40	15	1375	135	370
190000	147	147A3500	15°	350	8	155	310	10 / 23	185	35	350	50	16	1485	150	450
260000	157	157A3900	15°	390	8	170	345	10 / 25	205	40	390	70	18	1640	160	720

NOTE:

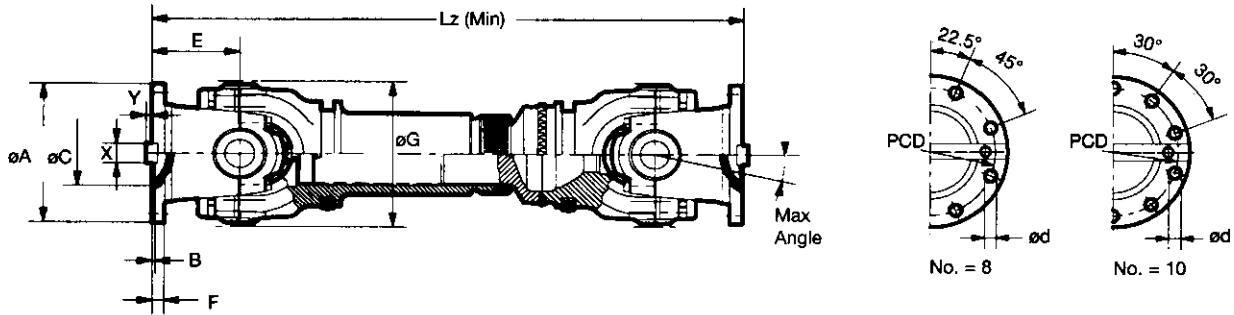
PCD = Pitch Circle Diameter
 Tsd (Nm) = Short duration torque
 Lz = Compressed length
 La = Extension

All dimensions in millimetres
 Shaft weight in kilograms



TRANSMISSIONER
KEMIPUMPAR

Box 5844, 102 48 Stockholm
 Tel. 08-667 30 00 · Fax 08-660 78 46



Short Coupled Driveshafts (Shaft Type Y)

RATING Tsd(Nm)	SERIES	PART NUMBER	MAX ANGLE	øA	B	øC	PCD	No. / ød	E	F	øG	X	Y	Lz A	La A	Lz B	La B	Lz C	La C	WEIGHT B (Lz Min.)
44000	107	107Y2250	15°	225	5	105	196	8 / 17	135	20	225	32	9	840	85	780	50	710	40	100
64000	117	117Y2500	15°	250	6	105	218	8 / 19	145	25	250	40	12.5	885	90	830	50	770	40	150
98000	127	127Y2850	15°	285	7	125	245	8 / 21	155	27	285	40	15	1025	120	950	70	880	60	210
140000	137	137Y3150	15°	315	8	130	280	10 / 23	170	32	315	40	15	1195	135	1100	90	980	60	350
190000	147	147Y3500	15°	350	8	155	310	10 / 23	185	35	350	50	16	1335	150	1225	90	1070	70	470
260000	157	157Y3900	15°	390	8	170	345	10 / 25	205	40	390	70	18	1420	160	1300	90	1200	70	640

NOTE:

PCD = Pitch Circle Diameter
 Tsd (Nm) = Short duration torque
 Lz = Compressed length
 La = Extension

All dimensions in millimetres
 Shaft weight in kilograms

The above Driveshafts are standard assemblies. Shorter Coupled Driveshafts can be manufactured using special parts. Contact our Technical Sales Department for more information.



TRANSMISSIONER
KEMIPUMPAR

Box 5844, 102 48 Stockholm
 Tel. 08-667 30 00 · Fax 08-660 78 46