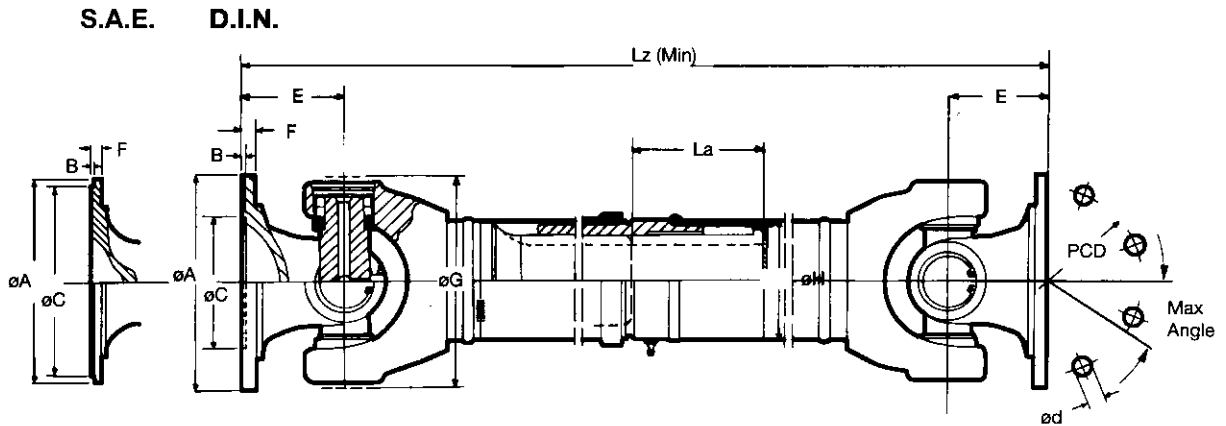


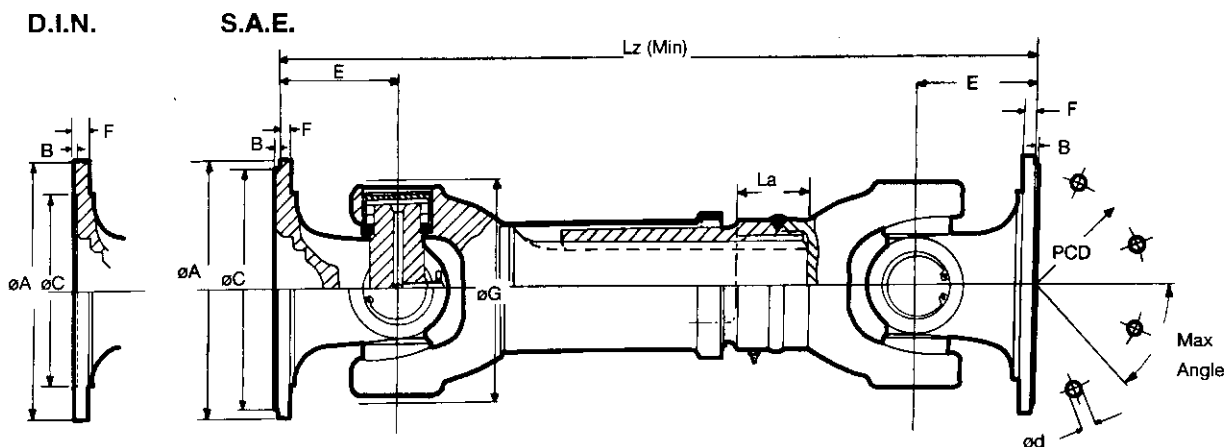
TRANSMISSIONER
KEMIPUMPAR
Box 5844, 102 48 Stockholm
Tel. 08-667 30 00 · Fax 08-660 78 46



Telescopic Driveshafts (Shaft Type A)

RATING Tsd (Nm)	SERIES	PART NUMBER	MAX ANGLE	øA	B	øC	PCD	No. / ød	E	F	øG	øH	Lz (Min.)	La (Ext.)	WEIGHT (Lz Min.)
SAE IMPERIAL FLANGE FITTINGS															
4000	65	65A515101	30°	146	1.8	95.25	120.65	4 / 12.7	72	10	125	70	546	100	17
		65A515104	30°	146	1.8	95.25	120.65	4 / 12.7	72	10	125	90	546	100	17
8000	75	75A606004	25°	180	1.6	168.275	155.58	8 / 9.5	72	10	155	90	576	100	27
		75A616104	35°	180	1.6	168.275	155.58	8 / 9.5	85	10	155	90	602	100	27
		75A656504	25°	180	1.6	168.275	155.58	8 / 10	72	10	155	90	576	100	27
		75A666604	35°	180	1.6	168.275	155.58	8 / 10	85	10	155	90	602	100	27
		75A707004	25°	203	1.8	196.85	184.15	8 / 9.5	72	10	155	90	576	100	27
		75A717104	35°	203	1.8	196.85	184.15	8 / 9.5	85	10	155	90	602	100	27
		75A757504	25°	203	1.8	196.85	184.15	8 / 10	72	10	155	90	576	100	27
		75A767604	35°	203	1.8	196.85	184.15	8 / 10	85	10	155	90	602	100	27
		75A818104	35°	203	1.8	196.85	184.15	12 / 11.1	85	10	155	90	602	100	27
		17500	95	95A828208	30°	203	1.8	196.85	184.15	12 / 11.1	92	12	174	110	769
95A909008	30°			287	4.0	222.25	247.65	8 / 16	112	20	174	110	809	130	61
DIN METRIC FLANGE FITTINGS															
4000	65	65A121201	18°	120	2.5	75	101.5	8 / 10	60	8	125	70	522	100	17
		65A121204	18°	120	2.5	75	101.5	8 / 10	60	8	125	90	522	100	17
		65A202001	30°	150	2.5	90	130	8 / 12	72	10	125	70	546	100	17
8000	75	75A202004	25°	150	2.5	90	130	8 / 12	72	10	155	90	576	100	27
		75A232304	35°	150	2.5	90	130	8 / 12	85	10	155	90	602	100	27
		75A343404	35°	165	3.5	95	140	8 / 16	85	10	155	90	602	100	27
		75A404004	25°	180	2.5	110	155.5	8 / 14	72	10	155	90	576	100	27
		75A414104	35°	180	2.5	110	155.5	8 / 14	85	10	155	90	602	100	27
		75A424204	35°	180	2.5	110	155.5	8 / 16	85	10	155	90	602	100	27
		10000	85	85A232306	30°	150	3	90	130	8 / 12	86	12	158	100	660
85A424206	30°			180	3.6	110	155.5	8 / 16	86	12	158	100	660	110	37
17500	95	95A444408	30°	180	3.5	110	155.5	10 / 16	96	15	174	110	769	130	61
		95A858508	30°	225	5.0	140	196	8 / 16	96	15	174	110	769	130	61
19000	97	97A444410	30°	180	3.6	110	155.5	10 / 16	110	15	204	120	830	140	65
		97A858510	30°	225	5	140	196	8 / 16	110	15	204	120	830	140	68
		97A959510	25°	250	6	140	218	8 / 18	110	18	204	120	830	140	72

Cross toothed Flanges can also be offered, contact our Technical Sales Department for more information.



Short Coupled Driveshafts (Shaft Type Y)

RATING Tsd (Nm)	SERIES	PART NUMBER	MAX ANGLE	øA	B	øC	PCD	No. / ød	E	F	øG	Lz (Min.)	La (Ext.)	WEIGHT (Lz Min.)
SAE IMPERIAL FLANGE FITTINGS														
4000	65	65Y515100	30°	146	1.8	95.25	120.65	4 / 12.7	72	10	125	404 - 464	40 - 100	16
8000	75	75Y606000	25°	180	1.6	168.275	155.58	8 / 9.5	72	10	155	460 - 530	30 - 100	26
		75Y616100	35°	180	1.6	168.275	155.58	8 / 9.5	85	10	155	486 - 556	30 - 100	26
		75Y656500	25°	180	1.6	168.275	155.58	8 / 10	72	10	155	460 - 530	30 - 100	26
		75Y666600	35°	180	1.6	168.275	155.58	8 / 10	85	10	155	486 - 556	30 - 100	26
		75Y707000	25°	203	1.8	196.85	184.15	8 / 9.5	72	10	155	460 - 530	30 - 100	26
		75Y717100	35°	203	1.8	196.85	184.15	8 / 9.5	85	10	155	486 - 556	30 - 100	26
		75Y757500	25°	203	1.8	196.85	184.15	8 / 10	72	10	155	460 - 530	30 - 100	26
		75Y767600	35°	203	1.8	196.85	184.15	8 / 10	85	10	155	486 - 556	30 - 100	26
17500	95	95Y828200	30°	203	1.8	196.85	184.15	12 / 11.1	92	12	174	590 - 680	40 - 130	57
		95Y909000	30°	287	4.0	222.25	247.65	8 / 16	112	20	174	630 - 720	40 - 130	57
DIN METRIC FLANGE FITTINGS														
4000	65	65Y121200	18°	120	2.5	75	101.5	8 / 10	60	8	125	380 - 440	40 - 100	16
		65Y202000	30°	150	2.5	90	130	8 / 12	72	10	125	404 - 464	40 - 100	16
8000	75	75Y202000	25°	150	2.5	90	130	8 / 12	72	10	155	460 - 530	30 - 100	26
		75Y232300	35°	150	2.5	90	130	8 / 12	85	10	155	486 - 556	30 - 100	26
		75Y343400	35°	165	3.5	95	140	8 / 16	85	10	155	486 - 556	30 - 100	26
		75Y404000	25°	180	2.5	110	155.5	8 / 14	72	10	155	460 - 530	30 - 100	26
		75Y414100	35°	180	2.5	110	155.5	8 / 14	85	10	155	486 - 556	30 - 100	26
		75Y424200	35°	180	2.5	110	155.5	8 / 16	85	10	155	486 - 556	30 - 100	26
10000	85	85Y232300	30°	150	3	90	130	8 / 12	86	12	158	495 - 600	45 - 110	30
		85Y424200	30°	180	3.6	110	155.5	8 / 16	86	12	158	400 - 600	40 - 110	28
17500	95	95Y444400	30°	180	3.5	110	155.5	10 / 16	96	15	174	590 - 680	40 - 130	57
		95Y858500	30°	225	5.0	140	196	8 / 16	96	15	174	590 - 680	40 - 130	57
19000	97	97Y444400	30°	180	3.6	110	155.5	10 / 16	110	15	204	650 - 720	80 - 110	60
		97Y858500	30°	225	5	140	196	8 / 16	110	15	204	550 - 720	40 - 110	56
		97Y959500	25°	250	6	140	218	8 / 18	110	18	204	650 - 720	80 - 110	66

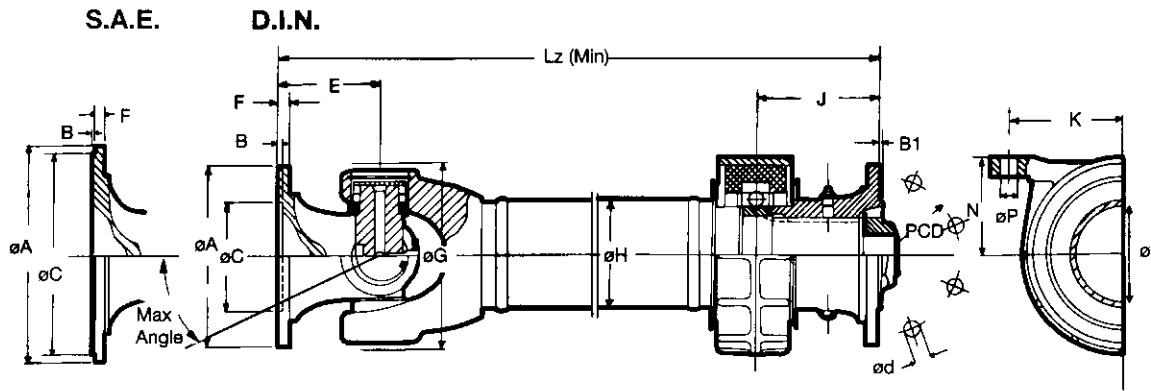
NOTE:

The above Driveshafts are standard assemblies. Shorter Coupled Driveshafts can be manufactured using special parts. Contact our Technical Sales Department for more information



TRANSMISSIONER
KEMIPUMPAR

Box 5844, 102 48 Stockholm
Tel. 08-667 30 00 · Fax 08-660 78 46



Midship Driveshafts (Shaft Type M)

RATING Tsd (Nm)	SERIES	PART NUMBER	MAX ANGLE	øA	B	B1	C	PCD	No. / d	E	F	øG	øH	øI	J	K	N	øP	Lz (Min.)	WEIGHT (Lz Min.)
SAE IMPERIAL FLANGE FITTINGS																				
4000	65	65M515101	30°	146	1.8	2	95.25	120.65	4 / 12.7	72	10	125	70	45	89.7	96.8	69	12.7	281	17.5
		65M515102	30°	146	1.8	2	95.25	120.65	4 / 12.7	72	10	125	89	45	89.7	96.8	69	12.7	292	17.5
		65M515301	30°	146	1.8	2	95.25	120.65	4 / 12.7	72	10	125	70	45	89.7	96.8	69	12.7	281	17.5
		65M515302	30°	146	1.8	2	95.25	120.65	4 / 12.7	72	10	125	89	45	89.7	96.8	69	12.7	292	17.5
8000	75	75M606004	25°	180	1.6	1.5	168.275	155.58	8 / 9.5	72	10	155	90	65	108	96.8	82	14.2	307	28
		75M606304	25°	180	1.6	1.5	168.275	155.58	8 / 9.5	72	10	155	90	65	87.5	96.8	82	14.2	295	28
		75M616004	35°	180	1.6	1.5	168.275	155.58	8 / 9.5	85	10	155	90	65	108	96.8	82	14.2	320	28
		75M616304	35°	180	1.6	1.5	168.275	155.58	8 / 9.5	85	10	155	90	65	87.5	96.8	82	14.2	308	28
		75M707004	25°	203	1.8	1.5	196.85	184.15	8 / 9.5	72	10	155	90	65	108	96.8	82	14.2	307	28
		75M717004	35°	203	1.8	1.5	196.85	184.15	8 / 9.5	85	10	155	90	65	108	96.8	82	14.2	320	28
		75M818004	35°	203	1.8	1.5	196.85	184.15	12 / 11.1	85	10	155	90	65	108	96.8	82	14.2	320	28
17500	95	96M828008	30°	203	1.8	1.5	196.85	184.15	12 / 11.1	92	12	174	110	65	105	96.8	82	14.2	384	63
DIN METRIC FLANGE FITTINGS																				
4000	65	65M121201	18°	120	2.5	2.3	75	101.5	8 / 10	60	10	125	70	45	86.5	96.8	69	12.7	254	17.5
		65M121202	18°	120	2.5	2.3	75	101.5	8 / 10	60	10	125	89	45	86.5	96.8	69	12.7	277	17.5
		65M202001	30°	150	2.5	2.3	90	130	8 / 12	60	10	125	70	45	86.5	96.8	69	12.7	266	17.5
		65M202002	30°	150	2.5	2.3	90	130	8 / 12	60	10	125	89	45	86.5	96.8	69	12.7	289	17.5
8000	75	75M202004	25°	150	2.5	2.3	90	130	8 / 12	72	10	155	90	65	105	96.8	82	14.2	305	28
		75M232004	35°	150	2.5	2.3	90	130	8 / 12	85	10	155	90	65	105	96.8	82	14.2	318	28
		75M232404	35°	150	2.5	2.3	90	130	8 / 12	85	10	155	90	65	105	100	82	14.2	318	28
		75M343204	35°	165	3.5	3.3	95	140	8 / 16	85	10	155	90	65	105	96.8	82	14.2	318	28
		75M404004	25°	180	2.5	2.3	110	155.5	8 / 14	72	10	155	90	65	105	96.8	82	14.2	305	28
		75M414004	35°	180	2.5	2.3	110	155.5	8 / 14	85	10	155	90	65	105	96.8	82	14.2	318	28
		75M424204	35°	180	2.5	2.3	110	155.5	8 / 16	85	10	155	90	65	105	96.8	82	14.2	318	28

NOTE:

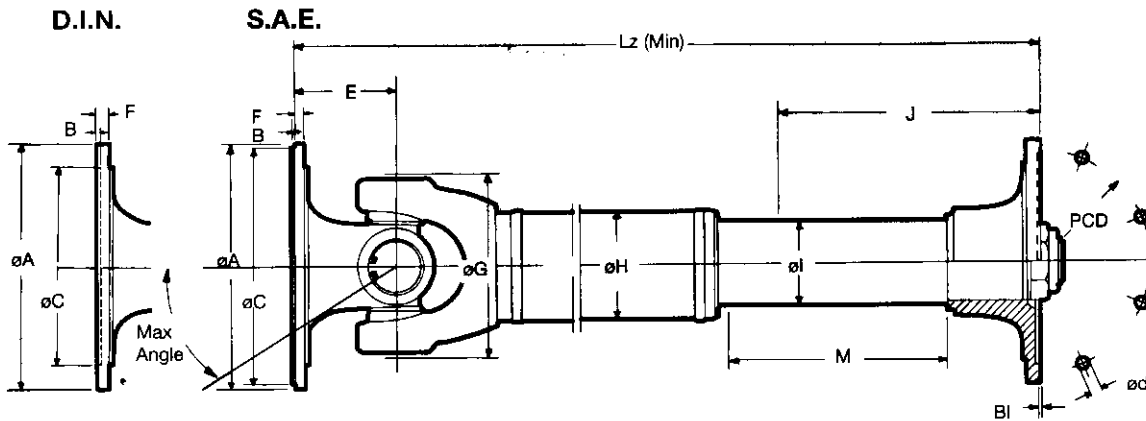
PCD = Pitch Circle Diameter
 Tsd (Nm) = Short duration torque
 Lz = Minimum Fixed length

All dimensions in millimetres
 Shaft weight in kilograms



TRANSMISSIONER
KEMIPUMPAR

Box 5844, 102 48 Stockholm
 Tel. 08-667 30 00 · Fax 08-660 78 46



Industrial Midship Driveshafts (Shaft Type B)

RATING Tsd (Nm)	SERIES	PART NUMBER	MAX ANGLE	øA	B	B1	øC	PCD	No. / ød	E	F	øG	øH	øI	J	M	Lz (Min.)	WEIGHT (Lz Min.)
SAE IMPERIAL FLANGE FITTINGS																		
8000	75	75B707004	25°	203	1.8	1.5	196.85	184.15	8 / 9.5	72	10	155	90	70	175	190	445	28
		75B717004	35°	203	1.8	1.5	196.85	184.15	8 / 9.5	85	10	155	90	70	175	190	458	28
		75B818004	35°	203	1.8	1.5	196.85	184.15	12 / 11.1	85	10	155	90	70	175	190	458	28
DIN METRIC FLANGE FITTINGS																		
4000	65	65B121201	18°	120	2.5	2.3	75	101.5	8 / 10	60	10	125	70	60	151	152	380	15
		65B121204	18°	120	2.5	2.3	75	101.5	8 / 10	60	10	125	90	60	151	152	367	15
		65B202001	30°	150	2.5	2.3	90	130	8 / 12	72	10	125	70	60	151	152	392	16
		65B202004	30°	150	2.5	2.3	90	130	8 / 12	72	10	125	90	60	151	152	379	16
8000	75	75B202004	25°	150	2.5	2.3	90	130	8 / 12	72	10	155	90	70	175	190	445	24
		75B232004	35°	150	2.5	2.3	90	130	8 / 12	85	10	155	90	70	175	190	458	24
		75B404004	25°	180	2.5	2.3	110	155.5	8 / 14	72	10	155	90	70	175	190	445	25
		75B414004	35°	180	2.5	2.3	110	155.5	8 / 14	85	10	155	90	70	175	190	458	25
10000	85	85B232306	30°	150	3	2.3	90	130	8 / 12	86	12	158	100	70	175	190	460	26
		85B424206	30°	180	3.6	2.8	110	155.5	8 / 16	86	12	158	100	70	175	190	460	26
17500	95	95B858508	30°	225	5.0	4.5	140	196	8 / 16	96	15	174	110	75	221	280	600	58

NOTE:

PCD = Pitch Circle Diameter
 Tsd (Nm) = Short duration torque
 Lz = Minimum Fixed Length.

All dimensions in millimetres
 Shaft weight in kilograms

J is given as the recommended distance from the Flange face to the centre line of the Support Bearing.
 The Bearing can otherwise be located along the length M.



TRANSMISSIONER
 KEMIPUMPAR

Box 5844, 102 48 Stockholm
 Tel. 08-667 30 00 · Fax 08-660 78 46